



The best Quality with the best Service Today!

# VRK-1900

## Auto Ref-Keratometer

DSP Measuring Engine Provides Stabilized Measured Results and clear Pupil / Iris Images

Exclusive Distributor in Romania:

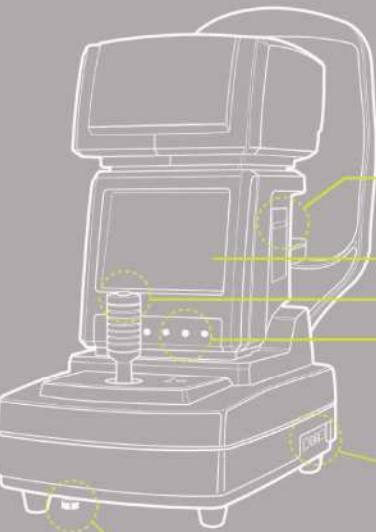
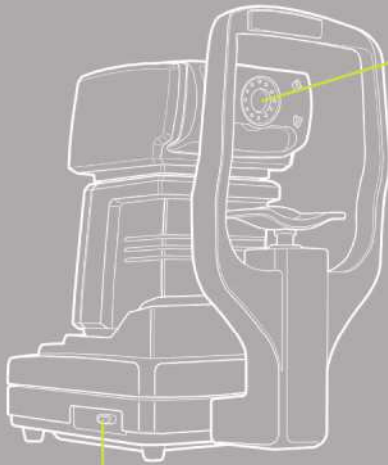
**3D Vision EuroGrup SRL**

22A/8 W.A. Mozart Street, Bucharest 020256

Tel. +40744.629.515 [www.eyecare.ro](http://www.eyecare.ro) [office@eyecare.ro](mailto:office@eyecare.ro)



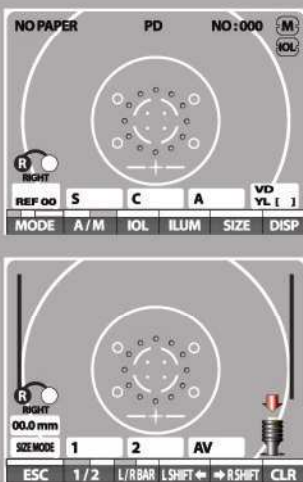
Various Measurements Support  
Wide Measurement Range  
Auto - Starting Function  
Accurate Measurement



- Automatic Starting Function**
  - As soon as properly aligned to each eye, VRK-1900 starts measurement process and generates measured result automatically
- Accurate Measurement**
  - Fine alignment and focusing
  - Automatic fogging to relax accommodation
  - Making eye comfortable with foggy method of eye fixation target measured result automatically
- Various Measurement and convenient Use**
  - Dual and single measurement mode selection button for refractometry, keratometry and contact lens base curve (CLBC)
  - Switch button for automatic and manual measurement mode including pupil distance (PD) measurement for both near and far vision
  - Retro illumination mode button for the measurement of cornea, contact lens and crystalline lens
  - Size mode button for the measurement of cornea and pupil diameter
  - Measured result display button
  - Chinrest moving up and down button
  - Print-out button
  - Intraocular lens (IOL) mode button for the measurement of eye with cataract and IOL
- Compatible with automatic Phoropter through RS232 Communication**
- High-speed Measurement Result Printing**
- Wide Measurement Range**
  - Refractometry : -25D - +22D
  - Keratometry : R5mm - R10mm
- Large Size and high Resolution color LCD Monitor**
  - Find display of iris image and alignment marks
  - 6.4 inch, 0.3 mega pixel LCD panel
- Easy and convenient User Interface**
- Safety**
  - Fuse for excess electric power shock protection
  - Clamping bolt for base locking



## Specifications



- +— Correct Alignment
- +— Incorrect Alignment
- /— Lean Alignment to Arrow Direction

|                               |                     |   |
|-------------------------------|---------------------|---|
| <b>Refractometer Mode</b>     | Sphere              | -25.00D ~ +22.00D                         |
|                               | Cylinder            | 0 ~ +/-10D                                |
|                               | Axis                | 1 ~ 180°                                  |
| <b>Keratometer Mode</b>       | Corneal Curvature   | R5.0mm ~ R10mm                            |
|                               | Corneal Refraction  | 67.5D ~ 33.7D                             |
|                               | Corneal Astigmatism | 0 ~ +/-10D                                |
|                               | Axis Angle          | 1 ~ 80°                                   |
| <b>Other Measurement Mode</b> | Pupil Distance      | 0 ~ 85mm                                  |
|                               | Pupil Diameter      | 0 ~ 12mm                                  |
|                               | CLBC                | R 5.0mm ~ R 10mm                          |
|                               | IOL                 | OK  |
|                               | Retro Illumination  | OK  |
| <b>Others</b>                 | Measuring Start     | Auto / Manual                             |
|                               | Display             | TFT color LCD / 6.4 inch / 0.3 mega pixel |
|                               | Alignment           | Color Display                             |
|                               | Printer             | Built-in Printer                          |
|                               | Output              | RS232C / USB(option port)                 |
|                               | Power Supply        | AC110 ~ 240Vac 50 / 60Hz 100VA            |
|                               | Dimension           | 242( W )X467( D )X465( H )                |
|                               | Weight              | 242( W )X467( D )X465( H )                |

## Distributed by

### View-M Technology Co., Ltd.

702 Ace Techno Tower 2, 197-7 Guro-dong,  
Guro-gu, Seoul, 152-050 KOREA  
Tel : +82-70-7730-2300 Fax : +82-2-866-2399

### 3D Vision EuroGrup SRL

22A/8 W.A. Mozart Street, Bucharest 020256  
Tel.+40744.629.515 Fax. +4021.2225223