



VDR-1900^D Digital Refractor

- Easy and flexible PD Control
- Selectable dioptric Step
- Accurate Rotary Prism
- Near View Chart

Exclusive Distributor in Romania:

3D Vision EuroGrup SRL

22A/8 W.A. Mozart Street, Bucharest 020256
Tel.+40744.629.515 www.eyecare.ro office@eyecare.ro

VDR-1900^D Digital Refractor

Key Features

- 5.8 inch high-contrast LCD display controller box
- Easy-to-adjust PD control with dial control on controller box
- Easy operation with 1 dial and colored keys on controller box
- VD checking window and pupil illumination for exact eye test with patient's exact eye position
- Rapidly reversing cross-cylinder lens for easier measurement
- Accurate rotary prism possible to check maximum 20 Δ using 0.1 Δ unit
- Rotatable near view chart (back/forth : 180°, left/right : 360°)
- High-speed printer and various measured data for easy analysis
- Detachable forehead rest and face shield for cleaning
- Perfect compatibility with VCL-1900 LCD chart system of View-M Technology



SPECIFICATION

Measurement Range

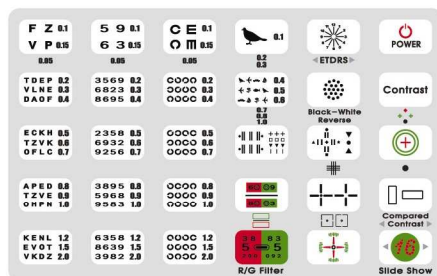
Spherical Lens	- 29 00D ~ +26 75D (0.25D/1.00D/2.00D/3.00D step)
Cylinder Lens	0.00D ~ - 9.75D (0.25D/1.00D/2.00D step)
Cylinder Axis	0° ~ 180° (1°/5°/10°/15°/20° step)
PD	50 ~ 80mm (Near Working Distance 35~70cm)
Rotary Prism Lens	0 ~ 20 Δ (0.1 Δ /0.2 Δ /0.5 Δ /1.0 Δ /2.0 Δ step)
Cross Cylinder	\pm 0.25D
Retinoscope	+ 1.50D (67cm), + 2.00D (50cm)
Visual Field	35°

Auxiliary Lens

Occluder	-
Pinhole Plate	\varnothing 1mm
Maddox Rod	Right Eye (Red, Horizontal) / Left Eye (Green, Vertical)
Red / Green Filter	Right Eye (Red) / Left Eye (Green)
Polarizing Filter	Right Eye (135°, 45°) / Left Eye (45°, 135°)
Split Prism	Right Eye (6 Δ BU) / Left Eye (10 Δ BI)
Cross Cylinder Lens	\pm 0.50D (Fixed with the axis set at 90°)

Dimension

Head	450(W) X 308(D) X 131(H) 6.8kg
Controller	230(W) X 268(D) X 152(H), 1.1kg
Thermal Printer	Printing Wide 48mm / Paper Wide 58mm
Power Source	AC 110~120V / AC 220~240V
Power Consumption	120VA



View-M Technology Co., Ltd.

702 Ace Techno Tower 2, 197-7Guro-dong,
Guro-gu, Seoul, 152-050 KOREA
Tel. +82.70.7730.2300
Fax. +82.2.866.2399

